



Clickey Occupation Sensor v3.x

Datasheet

 **LoRa Alliance**® Member

CLICKEY solutions
Lissenveld 47c
4941 VL Raamsdonksveer
The Netherlands
www.clickey.eu

Document revisions

Version	Date	Comment	Author
1.0	14-02-2018	Initial release	RG
1.1	22-01-2020	Update specs	SdS
1.2	27-05-2020	Restyled and updated specs	RG

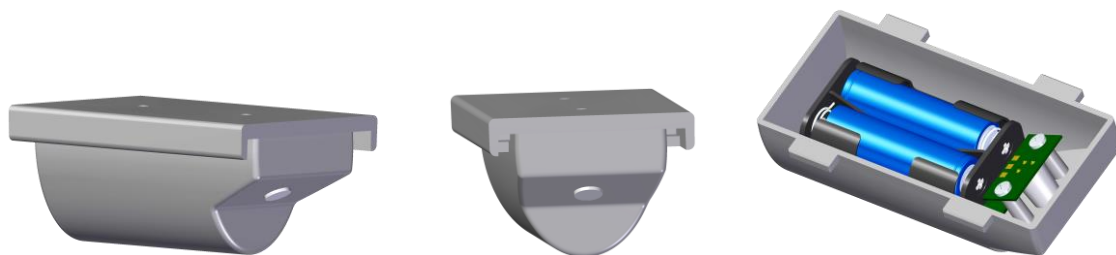
Clicky Occupation Sensor v3.x

Compact, LoRaWAN 1.0.3 compliant, Class A, 868MHz, battery or USB powered, passive IR, desk/workstation, meeting- or sanitary room occupation and presence detection sensor.

Ideally suited to create Smart Meeting Rooms, Smart buildings and (semi)automated cleaning solutions.

The sensor can be configured to suit the following applications:

- Human presence/movement detection
- Desk/workstation occupation detection
- Meeting room occupation signalling
- toilet usage and duration counter
- occupation duration or object attention timer



Specifications

Functionality	LoRaWAN Class A, desk/workstation, room and toilet occupation detection
Power supply	2x 1,5V Lithium, size AA batteries (not included)
Battery life	24+ months (typical; 10x per day reporting)
Operating temperature	0 °C to +50 °C
Sensors	PIR, 80° bundle, 2 to 5 meter effective range, wide and long-range PIR options are also available
Antenna	Integrated 3,0 dB
Chipset	Semtech (SX1272) + STM (STM32L)
Processor	STM32L1, Arm® Cortex®-M3 or STM32L0, Arm® Cortex®-M0+
Water resistance	Indoor use only
Dimensions	(LxWxH) 105 mm x 65 mm x46 mm
Weight	98 gr. (excl. batteries)
Mounting	Screw, glue, tape and desksystem mounting adapter
Certifications	CE, LoRa Alliance certification pending
Controls	Optional dashboard on Clicky Cloud Portal, various commands
Portal Data storage	3 months rolling, CSV-file download and graphs

Disclaimer

Use and proper functioning of Clicky devices is subject to local LoRa network coverage and internet availability. Do not use for critical situations. CLICKEY solutions is not liable for any damages resulting from the use of our products.

Customer support

Users of Clickey hardware and/or Cloud portal can receive assistance by contacting their sales representative or by contacting technical support at support@clickey.eu.

Copyright ©2016 - 2020 CLICKEY solutions

All rights reserved. This paper or any portion thereof may not be reproduced without the express written permission of CLICKEY solutions.

Information contained in this publication regarding device specifications is provided only for your convenience and may be superseded by updates. It is your responsibility to ensure that your application meets with your specifications. CLICKEY solutions disclaims all liability arising from this information and its use. Use of CLICKEY solutions devices in life support and/or safety applications is entirely at the buyer's risk, and the buyer agrees to defend, indemnify and hold harmless CLICKEY solutions from any and all damages, claims, suits, or expenses resulting from such use.